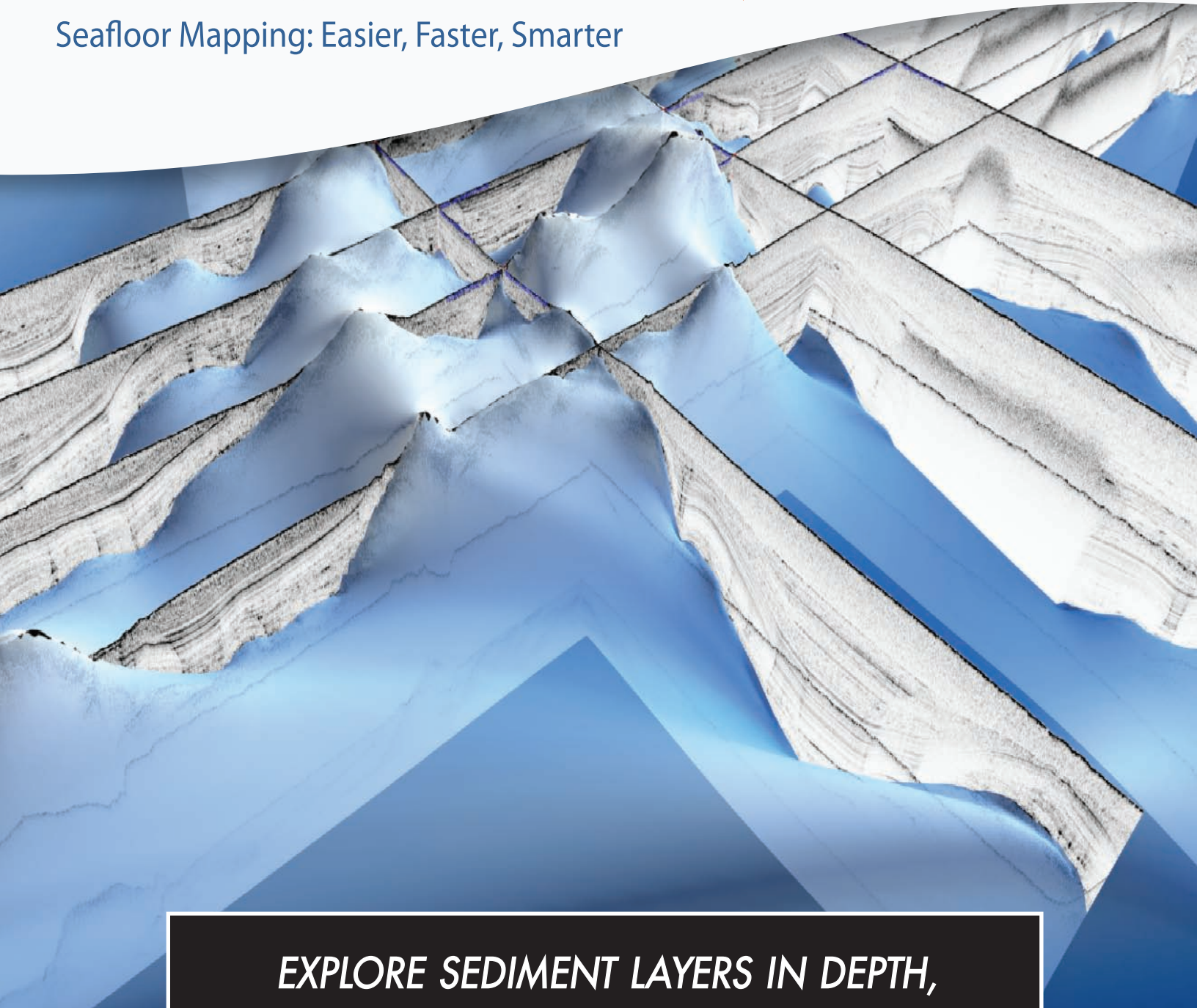





# SONARWIZ SUBBOTTOM

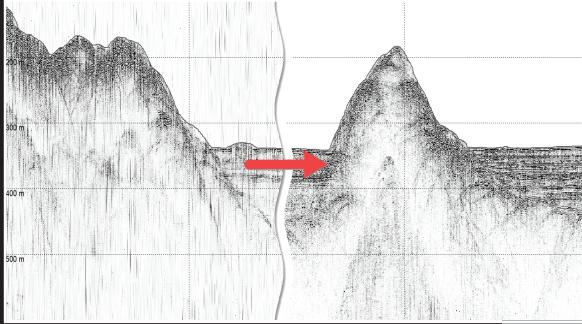
Seafloor Mapping: Easier, Faster, Smarter



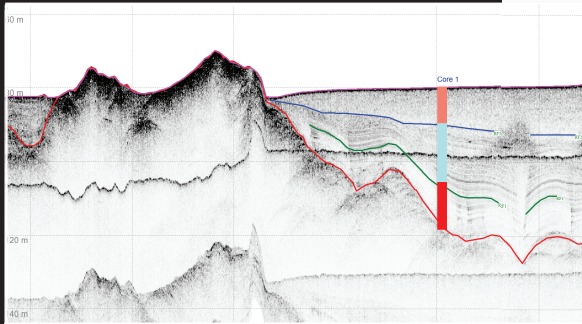
*EXPLORE SEDIMENT LAYERS IN DEPTH,  
WITH REAL-TIME DATA ACQUISITION*

-  Signal processing features designed specifically for marine survey data
-  Easily visualize your data in two or three-dimensions
-  Support for navigation, fathometer and magnetometer data

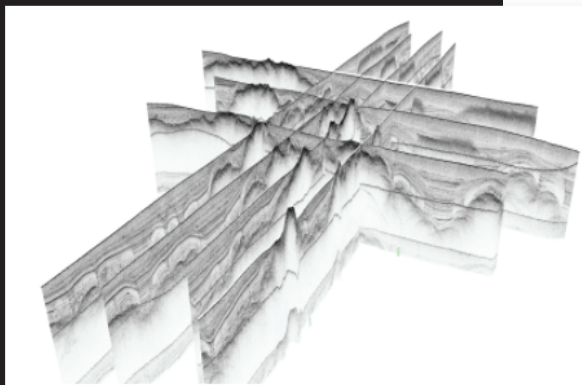
# SONARWIZ SUB-BOTTOM



Powerful gain and filtering options increase the information content of the data.



Bottom-track, filter and trace acoustic reflectors in the SonarWiz profile view.



Easily visualize and share SBP data in 3D.

## DATA PROCESSING

Comprehensive signal processing and gain control options for sub-bottom profile data, including features designed specifically for marine surveys such as heave removal and datum alignment. Easily apply gains and filters, edit or inject navigation, correct vertical offsets and apply datum adjustments to the entire survey, then export the corrected profiles to new SEG-Y files or other formats for processing in 3rd party seismic or GIS software.

## INTERPRETATION & VISUALIZATION

Interactive color tools and data filtering options help you make your data look its best. Digitize acoustic reflectors and record acoustic intersecting profiles directly in the digitizer. Annotate your profiles with well logs to aid interpretation and perform isopach and volumetric computations on the layers you've identified. View your data in both 2D and 3D windows. Generate customized reports of your work and export your data directly to one of the many supported GIS or CAD formats.

## LICENSING

SonarWiz is modular and each component can be purchased separately, as an add-on, or as part of a Field or Office bundle. We offer dongle and dongle-free licensing (DFL) options. DFL licenses eliminate the risk of lost or stolen dongles and can be transferred between any two internet-connected PCs in seconds. Network and Academic options are also available.

## SUPPORTED INTERFACES

EdgeTech 2000 SS/SB, 3000, 3100, 3200, FSSB; Falmouth Scientific HMS-622 ChirpCeiver; Innomar SES-2000 SB; Klein 3000 SS/SB; Knudsen SB; Kongsberg-GeoAcoustics GeoPulse Analog and GeoPulse Plus Digital; Kongsberg-Hugin AUV SS/SB; SyQwest Hydrobox, Stratabox, Bathy 2010/PC; Teledyne-Odom Chirp III, 1625, EchoTrac. Additionally with an analog box, SonarWiz is compatible with Sparkers, Boomers, Pulsers; Datasonic; GeoAcoustics; Falmouth Scientific Bubble Pulser.

## FILE FORMATS

SEG-Y (SEG, SGY, TRA), XTF, JSF, GCF, COD, SES, SDF, RAW, SL2, SL3, V4Log, ACF, ASD, SDI, BSS, ODC, KEB, RAD

Recommended PC 64bit, Win 10, DirectX11+, 8GB, SSD, USB port.

## CUSTOMER FRIENDLY SUPPORT YOU CAN COUNT ON

- CUSTOM ONSITE TRAINING ● WEBINARS ● WORKSHOPS ● TUTORIALS
- BI-WEEKLY PRODUCT UPDATES ● 24/7 DOWNLOADS ● FREE TRIALS

**CHESAPEAKE**  
**TECHNOLOGY**  
www.chesapeaketech.com